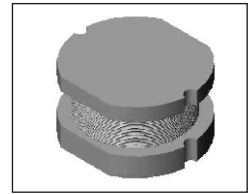


SMT Power Inductor

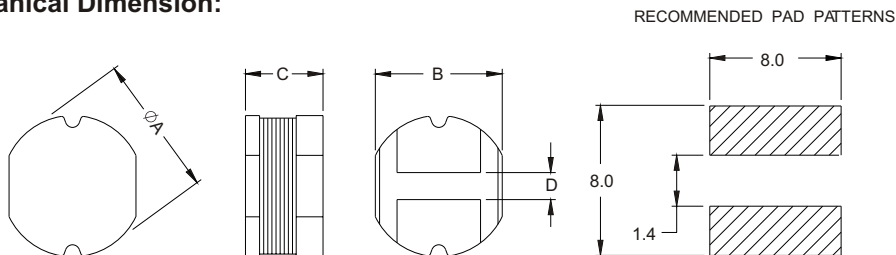
SI85 Type

Features

- RoHS compliant.
- Low profile (5.5mm max. height) SMD type.
- Unshielded.
- Self-leads, suitable for high density mounting.
- High energy storage and low DCR.
- Provided with embossed carrier tape packing.
- Ideal for power source circuits, DC-DC converter, DC-AC inverters inductor applications.
- In addition to the standard versions shown here, customized inductors are available to meet your exact requirements.



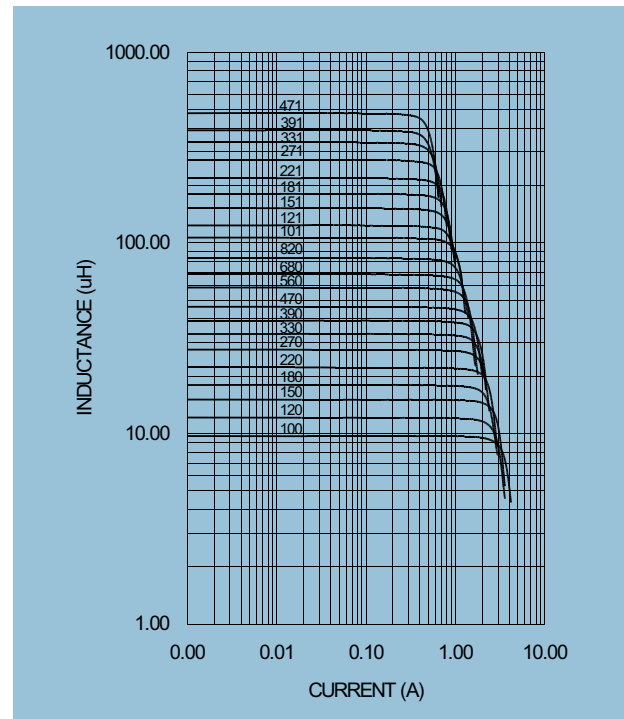
Mechanical Dimension:



UNIT:mm/inch
 A = 7.8 ± 0.2 / 0.307 ± 0.008
 B = 7.0 ± 0.2 / 0.276 ± 0.008
 C = 5.0 ± 0.5 / 0.197 ± 0.020
 D = 1.5 ± 0.2 / 0.059 ± 0.008

Electrical Characteristics: 25°C, 100KHz, 0.1V for 0.8~6.8uH. 1KHz, 1.0V for 10uH~1000uH.

PART NO.	L ¹ (uH)	DCR (Ω) MAX	I _{rated} ² (A dc)
SI85 - 0R8	0.8	0.0047	10.00
SI85 - 1R2	1.2	0.0061	8.00
SI85 - 2R2	2.2	0.0110	5.20
SI85 - 2R7	2.7	0.0150	4.60
SI85 - 4R7	4.7	0.0210	3.40
SI85 - 6R8	6.8	0.0400	2.80
SI85 - 100	10.0	0.0700	2.30
SI85 - 120	12.0	0.0800	2.00
SI85 - 150	15.0	0.0900	1.80
SI85 - 180	18.0	0.1000	1.60
SI85 - 220	22.0	0.1100	1.50
SI85 - 270	27.0	0.1200	1.40
SI85 - 330	33.0	0.1300	1.30
SI85 - 390	39.0	0.1600	1.20
SI85 - 470	47.0	0.1800	1.10
SI85 - 560	56.0	0.2400	0.94
SI85 - 680	68.0	0.2800	0.85
SI85 - 820	82.0	0.3700	0.78
SI85 - 101	100.0	0.4300	0.72
SI85 - 121	120.0	0.4700	0.66
SI85 - 151	150.0	0.6400	0.58
SI85 - 181	180.0	0.7100	0.51
SI85 - 221	220.0	0.9600	0.49
SI85 - 271	270.0	1.1100	0.42
SI85 - 331	330.0	1.2600	0.40
SI85 - 391	390.0	1.7700	0.36
SI85 - 471	470.0	1.9600	0.34
SI85 - 561	560.0	2.1600	0.31
SI85 - 102	1000.0	3.8500	0.26



1. Tolerance of inductance : ±15% for 0.8~6.8uH, ±10% for 10~1000uH.
2. I_{rated} is the DC current which cause the inductance drop less than 10% of its nominal inductance without current and the surface temperature of the part increase less than 45 °C.
3. Operating temperature: -20 °C to 105 °C (including self-temperature rise).



DELTA ELECTRONICS, INC.

(TAOYUAN PLANT CPBG) 252, SAN YING ROAD, KUEISAN INDUSTRIAL ZONE, TAOYUAN SHIEN, 333, TAIWAN, R.O.C.

TEL: 886-3-3591968; FAX: 886-3-3591991

<http://www.deltawww.com>